

 **WARNING**  
CHOKING HAZARD - Small Parts  
Not for children under 3 years.

# K-2451

## -Installation Instructions-

15" Drop Visor w/ 10-3/4" Light Holes (Mid & High Roof)

Need help? Call us at (323)-726-0437

Let us know how it went!

*-Look us up as Arandatruck-*



**Including:**

- K-0049 / 18" Drop Visor (Mid & High Roof)
- K-0050 / 13" x 16" Twisted Style Visor w/10-3/4" Light Holes (High Roof)
- K-2457 / 15" x 17" Widows Peak Visor w/10-3/4" Light Holes (Mid & High Roof)
- K-2452 / 15" x 12" Bowtie Visor w/ 10-3/4" Light Holes (Mid & High Roof)
- K-2453 / 15" x 17" V-Style Visor w/ 10-3/4" Light Holes (Mid & High Roof)

**NOTE: THIS INSTRUCTION BOOKLET CONTAINS IMPORTANT SAFETY INFORMATION**

PLEASE READ AND KEEP FOR FUTURE REFERENCE

ENGLISH pg 1-5



# Safety Contest

## WARNING

-Please use safety gear when installing any parts on your vehicle-

### Recommended Safety Gear

- Safety Glasses
- Gloves
- Ear plugs (Only in loud work environments)

## Installation Tools Required



Painter tape



3/8" & 7/16 Wrench



Medium socket wrench & 7/16" socket



Power drill (Battery operated or Eclectic Cord)



Permanent Marker



1/2" Drill bit



1/8" Drill bit



Window cleaner & micro fiber towel



Small size phillips screw driver

## Hardware Identification

\* Bolt kit changes by part # \*

① SAE Flat Washer / S.S / 1/4"



QTY: 25

② Carriage Bolts S.S / 10-24 x 3/4"



QTY: 12

③ Nylon Lock Nuts / Zinc / 10 - 24



QTY: 15

④ Phil Truss Machine Scr / S.S / 10 - 24 x 1/2"



QTY: 3

⑤ S. S. 1/4 - 20 Tap Bolts 1 1/4

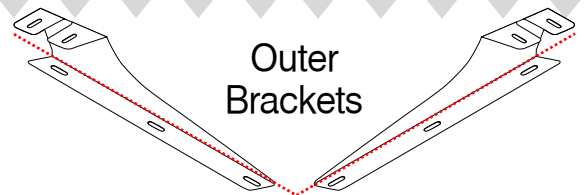


QTY: 10

⑥ J1420 Weld Nuts

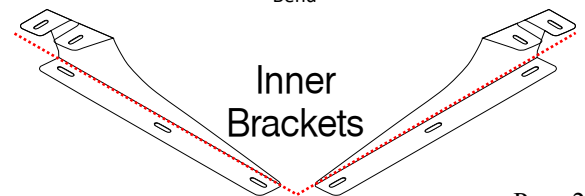


QTY: 10



Outer Brackets

95° Bend



Inner Brackets

90° Bend

# Installation Description

## Important

- Prepare all the tools before you install anything.

- Save all screws and washers

**- DO NOT lean against you're windshield, you will crack it.**

- DO NOT remove all the plastic from the visor

- Wear gloves and safety glasses.

---

### STEPS

1) Remove your current visor if you have one:

a) You will need to reuse the bolts which go on the side of the cab at the ends of the visor if you had a visor on the truck before. If not, you'll have to drill new holes.

b) Disconnect all the cab lights and cover the plugs with black tape. Leave one wire exposed if your new visor has lights.

2) Assemble the visor with all of the mounting brackets. Tighten the machine screws finger tight. Fully tighten the center, joining the two visor pieces.

a) Mark the holes for the sides before dry fitting the visor and marking holes for the brackets. **(Reference Step 2)**

3) Using two people to place the visor into position, one is holding the center of the visor and the other person will check alignment. The brackets have to touch the top of the windows rubber **(As shown in Step 3)** Use the brackets as templates and mark the holes. The holes you marked for the sides are a starting point and are not guaranteed to match up 100 percent.

4) Remove the visor.

5) Set a drill stop one inch from the tip of the drill bit tip to prevent breaking through and drilling into the cab headliner. If you do not have a drill stop, wrap the tape around the drill bit approximately one inch from the tip of the bit, this will prevent "Breaking through" and damaging the interior headliner.

6) Drill out a small hole with a 1/8 drill bit to have a starting point and for the bigger drill bit to follow.

7) Drill the pilot holes using a 1/8" drill bit.

8) Before drilling make sure you have a drill stop in place. Drill out the 1/8" holes with a 1/2" drill bit.

a) Make sure to use the exact size or a bit smaller.

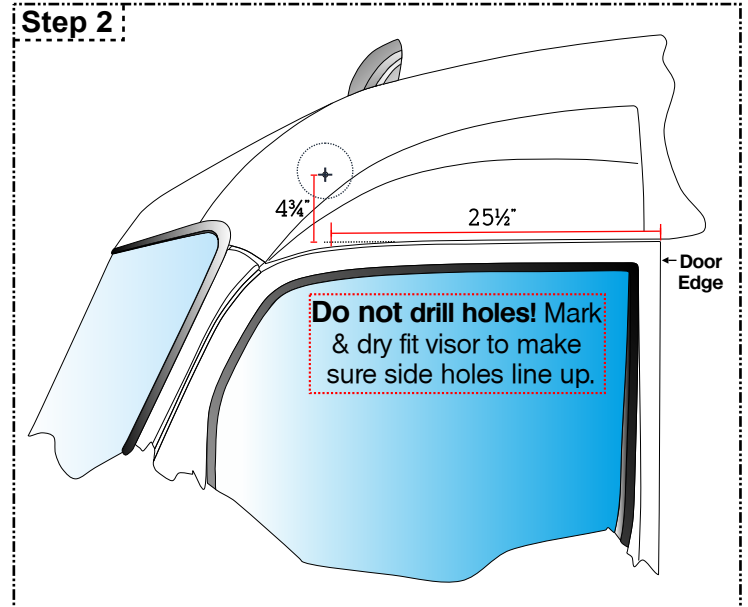
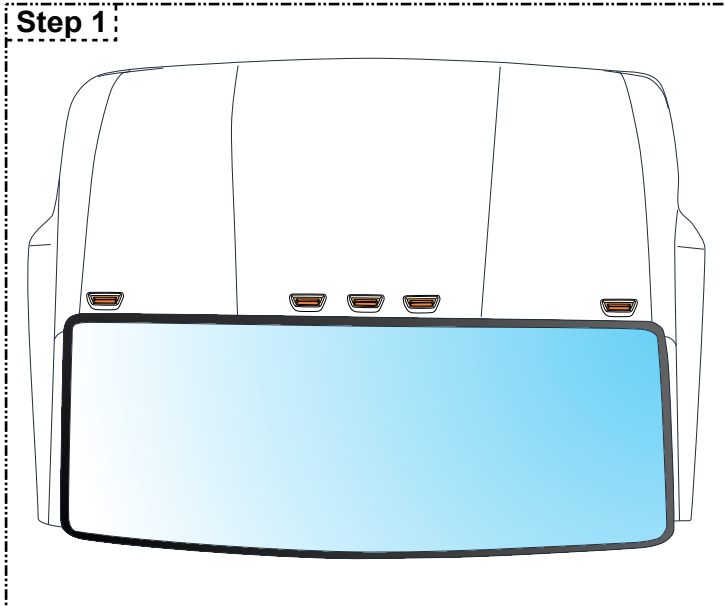
9) Remove or blow out any dust from the drilled holes. Press the well nuts into the 1/2" holes you just drilled. It needs to be a tight fit and not loose.

10) Install the mounting bracket once you feel the bolt "bottom out" **STOP TIGHTENING.**

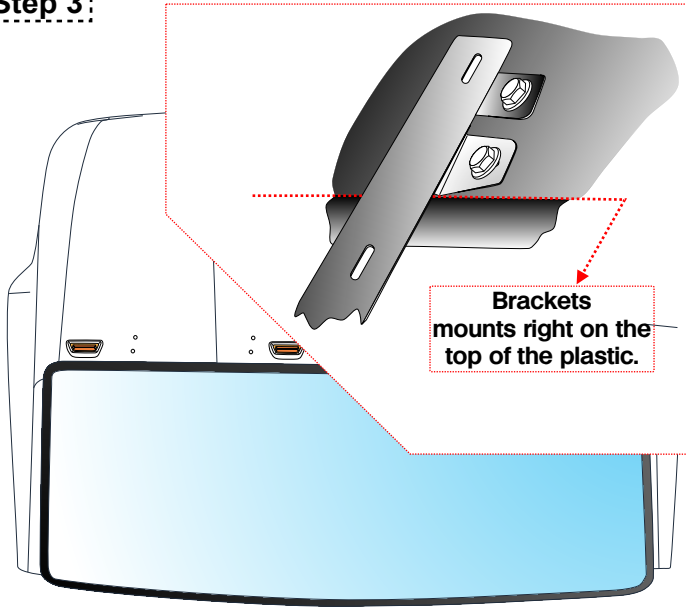
a) Optional: Fill well nut treading with silicone.

**Continues to next page .....**

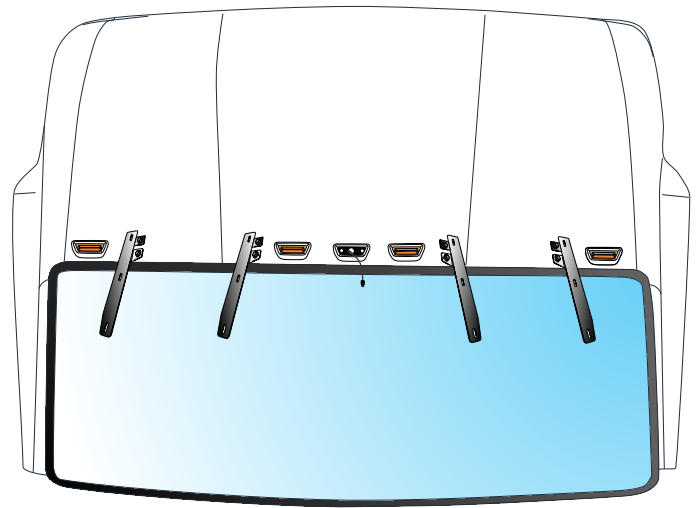
- 11) Remove PVC from around the holes for the whole visor. Helps with preventing scratches and less to clean.
- 12) Dry fit the visor onto the truck, to double-check that the side holes match up. Place the screws loosely onto the visor and to the brackets.
- a) If the holes line up on the side, remove the visor, and follow Steps 6 thru 10,
  - b) If they do not, remark the holes using the visor as a template. Remove the visor and repeat steps 6 thru 10.
- 13) Place the visor on the brackets and put in all the screws loosely, including the side screws. Once they are all in place, tighten the inner bracket first to the visor and then to the outer ones. Once you tighten the visor brackets to the visor, follow up by fully tightening the side screws.
- 14) Remove all the PVC from the whole visor.
- 15) Wipe away fingerprints using window cleaner and a Microfiber towel.
- a) Damp a Microfiber towel in window cleaner. One wipe on the areas with dirt and fingerprints is enough. Excessive wiping will leave marks on the metal.



**Step 3:**

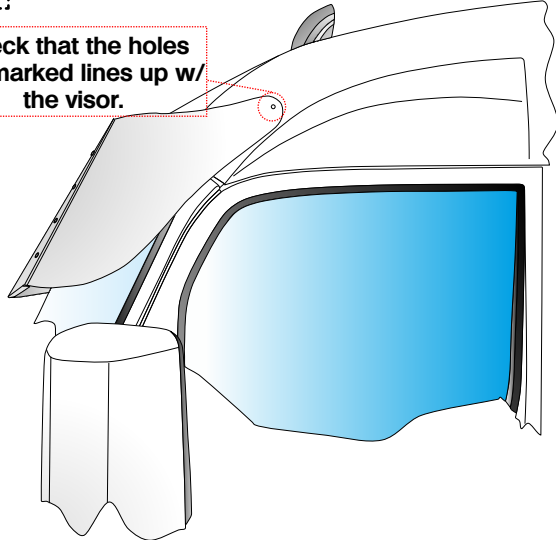


**Step 4:**

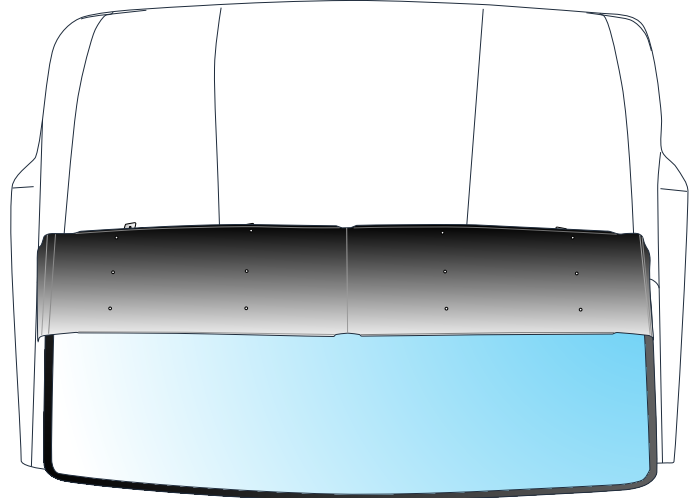


**Step 5:**

Check that the holes you marked lines up w/ the visor.



**Step 6:**



**Step 7:**

